



Climbing Information

Providing the latest information about weather condition, mountain route and walking trail on guidance map in the Nature Center. The nature observation tour that you can observe lots of natural resource in this area is also available.



Tourist information

Please feel free to contact us, we provide guidance information for hot spa, hotels, sightseeing spots, scenic view points and local products. Also, curators are available to give you an adequate description about articles on our exhibition.



Environmental issue

[Solar energy]

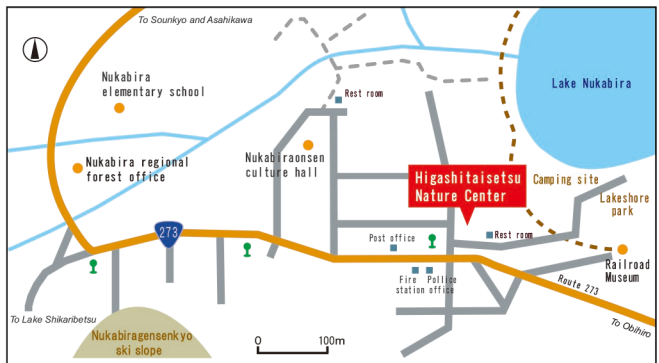
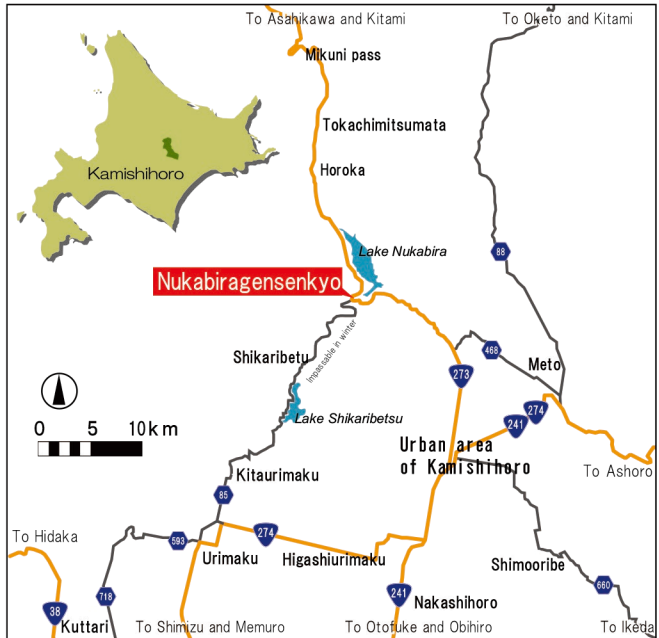
Photovoltaic power generation system is installed as a main source of supplying electricity to the lighting system and other electric equipment. Also, all equipment used in this building are very energy conscious products, such as LEDs (low power consumption light) and many sensors to save energy are adopted.

[Thermal storage heating]

Earth tube is installed as underground heat exchanger that can capture heat from and dissipate heat to the ground. Heat energy in winter season is mainly generated by using off-peak lower cost electric power and store to the ground. This also works as passive ventilation system that intakes fresh air to this building through the earth tube. This heat exchanger reduces electricity consumption of air conditioners significantly.



Access Map



[By Bus] About 100 minutes by Tokachi bus bound for Nukabiragensenkyo Onsen from JR Obihiro Station.

[By Car] 54 Km from Otufuke-Obihiro Exit of Doto Expressway heading toward Asahikawa through route 241 and 273

Higashitaisetsu Nature Center

Hours: 9 a.m. to 5 p.m. (6 a.m. to 5 p.m. on July and August)

Closed: Wednesday (Thursday if Wednesday is a holiday) and December 30th through January 5th

Admission: Free of charge

Location: Nukabira Gensenkyo, Kamishihoro town, Katou county, Hokkaido, Japan 080-1403

Phone: 01564-4-2323

Web Page: <http://www.ht-shizenkan.com>



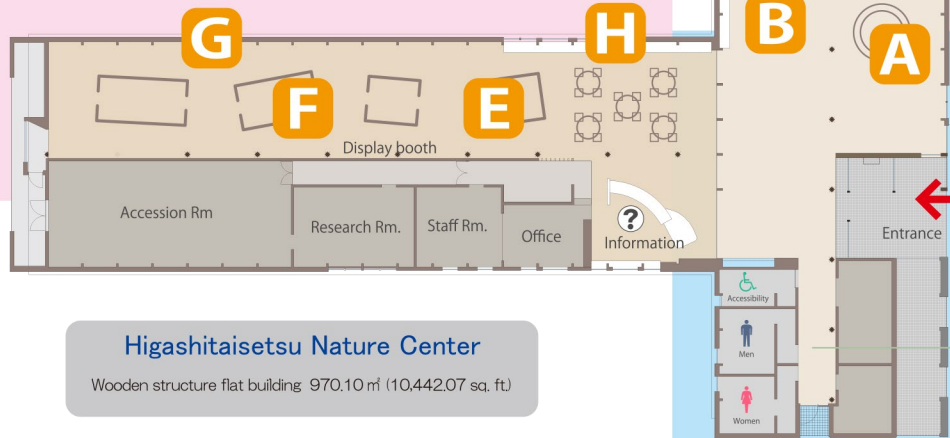
Higashitaisetsu Nature Center

Guidance

Higashitaisetsu Museum Nukabira Gensenkyo Visitor Center

Floor space 500.72 m²
(5,389.71 sq. ft.)

Floor space 469.38 m²
(5,052.36 sq. ft.)



Higashitaisetsu Nature Center

Wooden structure flat building 970.10 m² (10,442.07 sq. ft.)

A Nature of the Higashitaisetsu region



Introducing of mountains, landscape, geological formation, ecological zone and vegetation of Higashitaisetsu region in Daisetsu National Park through picture panels, miniature models and a video navigation system.

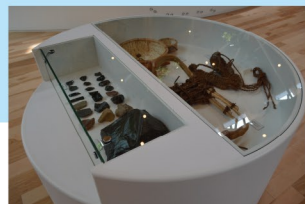


B Extinct animals and introduced species

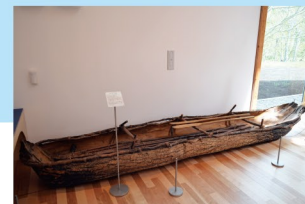
Display extinct animals such as Hokkaido Wolf (*Canis lupus hattai*), Japanese River Otter. Signal Crayfish is exhibited in the aquarium as a non-native species.



D Footprint of Human being and culture of Ainu people



Tools made of Obsidian, shoes and bowls made of plants are displayed as unearthed articles of Paleolithic era that is about twenty thousand years ago. Also, commodities of Ainu people are displayed to learn about their lifestyle.



E Creatures of the Higashitaisetsu

Aquarium with freshwater fish, aquatic insects and amphibians give you an opportunity to learn their ecological distribution of Higashitaisetsu region.



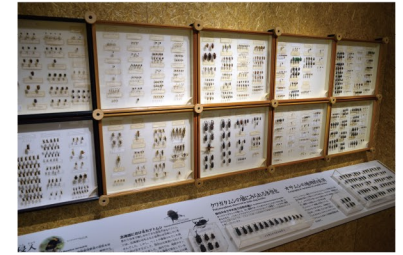
C Biodiversity of the Higashitaisetsu region



Mammalian and aves such as Brown Bear, Hokkaido Deer, Sellet's Sea Eagle and others, those mounted animals are displayed in diorama representing an ecosphere of Higashitaisetsu high mountain region and forests. You can also listen to animal call of Pika, Boreal Owl and other residential animals of this region.

F Insects living in Higashitaisetsu and from the world

More than five thousands of collection of insects from both Higashitaisetsu region and the world on exhibit.



G Basic knowledge of insects



Educational tools and scopes help you to understand a structure and functions of insects and their evolutionary process.



H Experience learning

Computer aided educational tools, wooden puzzles, quizzes and visual documents provide you an opportunity to learn insects and to give a new sight into Kamishihoro town.

